

Specifications

The resuscitator Ambu baby Mark IV is a reusable hand-operated double-wall self-inflating device used to provide or assist pulmonary resuscitation.

Manufacturer: Ambu®

Materials:

- Silicone rubber: inner and outer bag, override cap, valve disc, strap, AO mask.
- Polysulphone (PSU): patient valve housing.
- PSU and silicone rubber: patient connector.
- PSU and stainless steel: pressure limiting valve.
- Polyacetal (POM): inlet valve housing, screw cap (two parts), connector.
- Polyethylene (PE) reinforced: expiration connector.
- Polypropylene (PP): expiration connector.
- Aluminium: nameplate.
- Chloroprene rubber with closed cells foam: Ambu mask 0A inner lining.

Feature:

Maximum volume delivered 300ml.

- Dead space: <6ml
- Leaks both ways: non-measurable.
- Maximum ventilation frequency: depends on tidal volume used.

Inspiratory resistance:

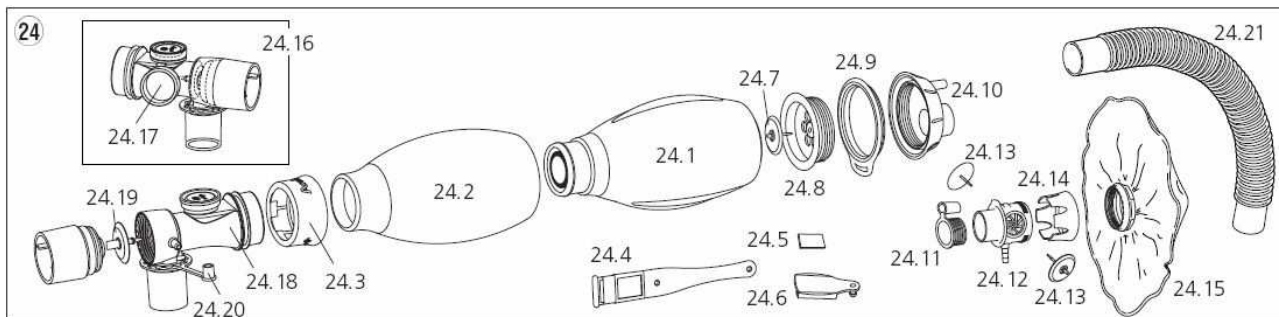
- at 50l/min: -0.37 kPa (-3.7cmH₂O)
- at 5l/min: -0.05 kPa (-0.5cmH₂O)

Expiratory resistance:

- at 50l/min: 0.45 kPa (4.5cmH₂O)
- at 5l/min: 0.06 kPa (0.6cmH₂O)

Application temperature: -18 to 50 °C

Resuscitator bag: - The bag expansion rate should cover all recommended practical-use frequencies.

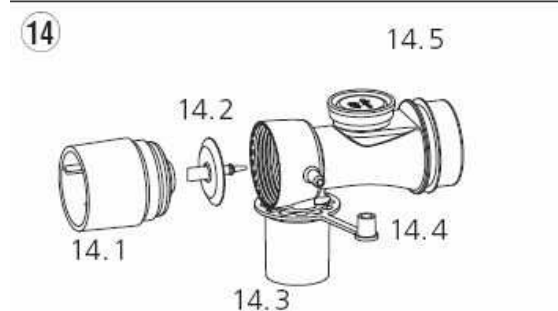


Self inflating bag with inlet valve (24.3 to 24.1)

The resuscitator bag: double-walled tape, consists of a self-expanding inner bag made from preformed silicone rubber with a thin-walled outer cover, fitted airtight around the outlet connectors.

Length: 265mm with 85mm diameter.

- Volume: 1500ml
 Weight: 190g
 Components:
- Connector, complete, towards patient valve (24.3).
 - Outer cover (24.2)
 - Inner bag (24.1)
 - Inlet valve for combined air and oxygen: complete with silicone membrane and tube connector for the oxygen reservoir (24.7 to 24.10).
 - Strap, complete with nameplate (24.4).



Single, shutter valve, baby, complete.

- Valve opening pressure approximately 4kPa (40cmH₂O).
 When the valve's capacity is overridden, the elasticity of the bag's outer cover will limit the airway pressure to approximately 4.5kPa (45cmH₂O) when the bag is squeezed normally with one hand.
 The valve disc's guide pin in the patient valve visibly indicates when the unit is functioning correctly.
- Expiration connector: standard ISO 30mm male (14.1).
- Disc 14.2
- Patient connector: standard ISO 22/15mm (14.3).
- Inlet connector (14.5)
- Weight
- Minimum dead space
- Transparent, unbreakable, easy to dismantle (5 separate parts).
- Non-sticking, even in very humid conditions.

Oxygen reservoir tube: Length 250mm, volume 100ml.



Mask AO

With transparent shell and removable extremity; dead volume

	approximately 4ml.
Cleaning:	All components can be chemically disinfected and/or steam sterilized between 121 to 134°C (follow the instructions in the manual).
Unit presentation:	1 resuscitator bag, complete; reusable, including baby shutter valve, oxygen reservoir and 1 OA (10) mask.
Packaging:	1 unit, wrapped in a protective plastic bag and packed in a carton. With multilingual user and maintenance manual.
Labelling:	Manufacturer's name, product name and reference and serial numbers, and CE mark and reference number of notifying body.
Storage condition:	Temperature range: -40 to 70°C. Never store the resuscitator in close proximity to products containing oil or grease.
Note:	Never place pressure on the bag during storage. For long-term storage, the resuscitator should be packed away in a cool place, away from direct sunlight.
Other:	Conforms with: - European <i>Medical Device Directive</i> 93/42/EEC., class IIa; - ASTM F 920-93 - EN ISO 10651-4:2002